



Christchurch
Girls' High
School | *Te Kura
o Hine
Waiora*

Prospectus 2025





Shaping our Future:

Principal's message

Christchurch Girls' High School/*Te Kura o Hine Waiora*, welcomes you to a vibrant, positive and caring community where we celebrate our culture, value diversity, promote inclusivity and create a sense of belonging. Our values of Manaakitanga (respect and dignity), whanaungatanga (belonging and relationships), aroha (empathy and concern for others) and rangatiratanga (courage and strength to lead) are at the centre of all that we do.

Our beautiful setting enhances a stimulating and nurturing learning environment, which is underpinned by rich tradition, inspired by innovation and driven by the pursuit of excellence in all its' endeavours. Each student is challenged to be curious, creative and discerning in their thinking, encouraged to find their passions, cultivate their strengths and strive for their personal best. With our commitment to high quality teaching and learning tailored to reflect the needs and aspirations of our students, our dedicated teachers provide an outstanding holistic education, which engages, empowers and supports our students to flourish personally and academically.



We believe that developing character is crucial, not only as a foundation for academic endeavour, but also in modelling our values. Through fostering a culture of respect, trust and collaboration, enhancing attitudes and approaches to learning, building student agency, and supporting wellbeing, our students are confident, capable and adaptable.

With high aspirations and expectations for all of our students, our community thrives on opportunities for personal development, contribution, commitment and challenge across academic, arts, sport, leadership and service pursuits. This community spirit and element of fun creates a place where students will make friends and gain the knowledge, skills and experiences, that will allow them the freedom to shape their own future to realise their ambitions.

I feel honoured and privileged to be leading this outstanding school in the heart of our city and I am proud of our school community. I look forward to welcoming you to our school to discover the benefits of a Christchurch Girls' High School/*Te Kura o Hine Waiora* education and gain a unique insight into what is at the heart of our school that supports our students to become more than they imagined possible.

Helen Armstrong
Principal / Tumuaki





Christchurch Girls' High School / Te Kura o Hine Waiora has been educating young women since 1877. Since its beginning over 140 years ago, talented, motivated ākonga have been meeting with dedicated and experienced staff to create a supportive caring community that extends far beyond physical boundaries and their time at school.

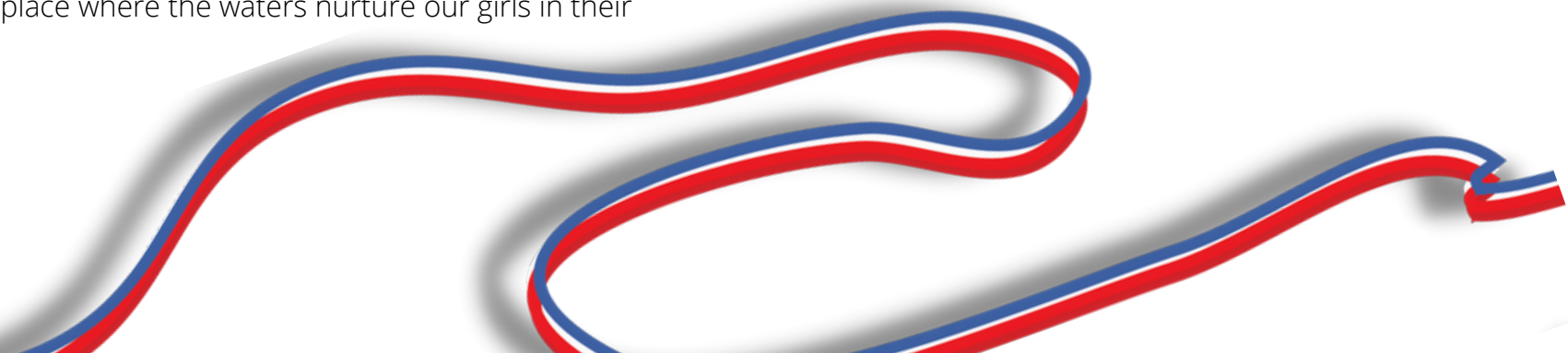
This rich heritage is woven into the tapestry of life at Christchurch Girls' High School / Te Kura o Hine Waiora. From the time of Helen MacMillan Brown (nee Connon, Principal 1883-1894), the first woman to gain an Honours degree in the British Empire, to the present, a premium has been placed on the education and leadership of women in society.

Embedded in our history is a focus on innovation and challenge to the prevailing norms by the first women founders who chose to educate girls well before women received the suffrage in our country. These early women forged the way for many of the freedoms and rights we now enjoy as females. They were forerunners of the feminist movements of the later 20th Century which further transformed rights for women and girls in social, political and economic arenas.

Our river site also has significant history for Te Ngāi Tūāhuriri Rūnanga and we are committed to nurturing a strong bicultural relationship. The Māori name for our school was gifted more recently to us by Ngāi Tuāhuriri and means “this is the place where the waters nurture our girls in their education”.



*The school motto is **sapienta et veritas**. This Latin expression means Wisdom, the kind that goes beyond book-learning to knowing ourselves, and Truth, meaning integrity and honesty in ourselves and towards others.*





All students at Christchurch Girls' High School / Te Kura o Hine Waiora belong to one of six school 'house' groups. The House system established over 100 years ago helps build a sense of belonging and friendly competition at school events such as sports days and cultural events. The House system allows for the vertical mixing of year levels, an important component of creating a vibrant school community. Our Houses also emphasise service and school-wide house charity events. Each house is named after a famous Cantabrian and has a colour to help define it.

Connon - Named in honour of Helen Macmilan Brown and associated with the colour white.

Deans - Named in honour of Jane Deans and through her the spirit of early Canterbury pioneer women and associated with the colour yellow.

Harper - Named in honour of Henry Harper, the first Bishop of Canterbury and associated with the colour red.

Rolleston - Named in honour of William Rolleston, instrumental in the establishment of Christchurch Girls' High School / *Te Kura o Hine Waiora* and associated with the colour blue.

Selwyn - Named in honour of Bishop Selwyn, an early constitutional and Māori Affairs lobbyist and associated with the colour green.

Sheppard - Named in honour of Kate Sheppard, an inspiring and leading suffragist and associated with the colour purple.



Excellence, in the words of Greek philosopher Aristotle, is not an act but a habit. Excellence is never an accident. It is always the results of high intention, sincere effort and intelligent execution. It is not an accident that the academic value added to ākonga at Christchurch Girls' High School / *Te Kura o Hine Waiora* is considerable. Excellence has become second nature in all that we do.

Christchurch Girls' High School / *Te Kura o Hine Waiora* is proud to excel at local, regional and national levels on academic, sporting and cultural stages.

Our ākonga regularly receive awards and commendations in choral competitions and chamber groups. National titles have been won in field hockey, basketball, cricket, rowing, rugby and swimming.

Ākonga are encouraged to enter inter-school competitions for speech, drama, maths, science and business.

Colours and Gold Awards are awarded to ākonga in recognition of academic, sporting and cultural achievements and for service associated with the school. Special assemblies are held to celebrate the successes of the recipients.



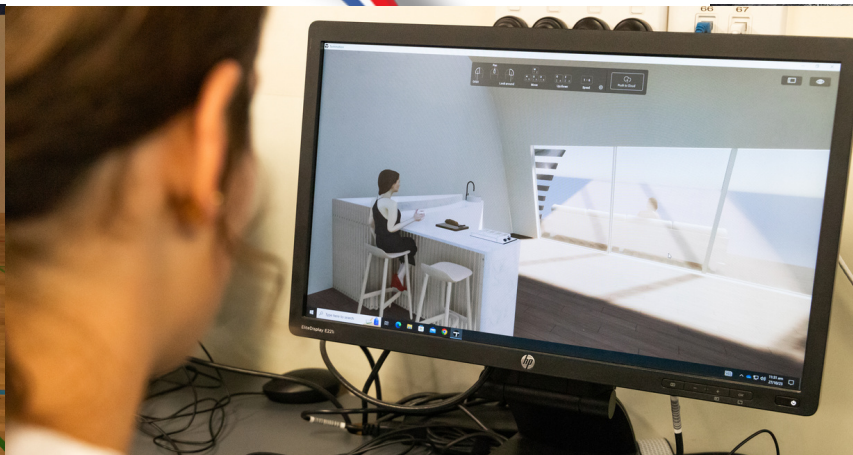


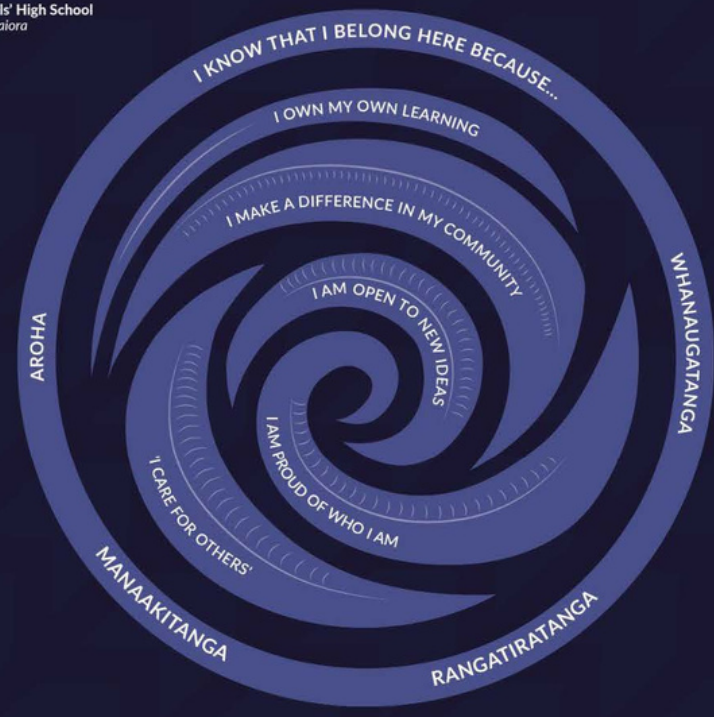
Christchurch Girls' High School / Te Kura o Hine Waiora is a specialist in girls' education and young women flourish in an all-girl environment. As a member of the Australasian Alliance of Girls' Schools, we keep up to date with leading research and current happenings.

Our curriculum is tailored for girls, giving them the opportunity to explore and grow in an environment which nurtures them as young women. Furthermore, our delivery of the curriculum seeks to cater for the ability and learning needs of the individual. We want to enrich, enhance and extend the talents of each girl.

Classes at all levels may be taken to a variety of locations for the purpose of research, observation and instruction. Opportunities are given for ākonga to enter competitions, perform at festivals, attend off-campus courses, participate in university study and to be part of mentoring programmes. Field and cultural trips, marae stays, international exchanges, outdoor education camps and career outings are among some of the rich variety of other activities on offer at Christchurch Girls' High School / Te Kura o Hine Waiora.

Learning needs to be made relevant for ākonga and Christchurch Girls' High School / Te Kura o Hine Waiora encourages authentic learning to occur.





JUNIOR GROWTH PROFILE

I own my learning

- I connect with my past and present
- I make choices about what and how I learn
- I take opportunities to challenge myself
- I set goals and reflect on my progress
- I celebrate my success

I am proud of who I am

- I take risks to grow
- I demonstrate resilience
- I have a growth mindset
- I have the courage to step outside my comfort zone
- I learn from my mistakes

I make a difference in my community

- I use my voice to take action
- I work with others to bring about change
- I take care of my surroundings
- I see myself as a teacher and learner (ako)
- I am inclusive of others

I care for others

- I value the bicultural heritage of Aotearoa
- I am culturally responsive
- I consider the impact of my words and actions
- I am kind, respectful and empathetic
- I am honest and behave with integrity

I am open to new ideas

- I am curious and ask questions
- I think critically
- I take opportunities to solve problems
- I draw on prior knowledge to make connections
- I listen to others to understand them

At Christchurch Girls' High School / Te Kura o Hine Waiora each girl has the

right to the best possible educational experience. We believe all ākonga have the capacity to learn and that learning is an active rather than passive process. The best learning occurs when each girl is able to build on existing knowledge, make sense of new experiences and feel connected.

Quality teaching is provided and a positive classroom learning environment is fostered. Strong relationships are built in the classroom. Subject teachers are available to be contacted, or may contact parents, about the learning and progress of individual ākonga. At Christchurch Girls' High School / Te Kura o Hine Waiora ākonga are encouraged to own their learning.

Junior Classrooms

All Year 9 ākonga study each of the eight essential learning areas of the New Zealand Curriculum: English, Languages, Mathematics, Physical Education and Health, Science, Social Sciences, Technology and The Arts. These areas provide the contexts within which knowledge, key competencies and values are developed. The Year 10 programme continues with compulsory studies of English, Mathematics, Science, Physical Education and Social Studies and three optional subjects.

In 2023 we introduced additional integrated options from which ākonga are able to choose half year semester courses. These will align closely with our Junior Growth Profile and further develop our ākonga and their interests.

Senior Classrooms

Our ākonga are well prepared for national qualifications at Year 11, 12 and 13. We are very proud of the high standards they achieve. Senior ākonga are encouraged to follow multi-level courses of study as appropriate.

All Year 11 ākonga study English, Mathematics and Statistics. They also choose four additional subjects. At Year 12 and 13, there are no compulsory options.

Year 13 ākonga study five subjects. The most able students enter Scholarship examinations.



Christchurch Girls' High School/ Te Kura o Hine Waiora Curriculum 2024

	Y9	Y10	NCEA Level 1	NCEA Level 2	NCEA Level 3
English	English	English	English <i>(3 different options)</i>	English <i>(4 different options)</i>	English <i>(3 different options)</i>
Enrichment Programs	Learning Enhancement <i>*See Below for semester course options</i>	Learning Enhancement English for Second Language Learners (ELL)	ELL	ELL	ELL
Health & Physical Education	Health and Physical Education	Health and Physical Education	<ul style="list-style-type: none"> ● Health ● Physical Education 	<ul style="list-style-type: none"> ● Health ● Physical Education ● Performance Sport 	<ul style="list-style-type: none"> ● Health ● Physical Education ● Performance Sport
Languages	<ul style="list-style-type: none"> ● French ● German ● Te Reo Māori 	<ul style="list-style-type: none"> ● French ● German ● Te Reo Māori 	<ul style="list-style-type: none"> ● French ● German ● Te Reo Māori ● Chinese (* Te Kura) 	<ul style="list-style-type: none"> ● French ● German ● Te Reo Māori ● Chinese (* Te Kura) 	<ul style="list-style-type: none"> ● French ● German ● Te Reo Māori ● Chinese (* Te Kura)
Mathematics	Mathematics	Mathematics	Mathematics	Calculus Statistics Mathematics ELL Mathematics	Statistics Calculus ELL Mathematics
Science	Science	Science	Science <i>(3 different options)</i>	Biology Chemistry Physics	Biology Chemistry Physics

Social Sciences	Social Studies	Social Studies	<ul style="list-style-type: none"> ● History ● Classical Studies ● Geography 	<ul style="list-style-type: none"> ● History ● Classical Studies ● Geography ● Psychology 	<ul style="list-style-type: none"> ● History ● Classical Studies ● Geography
Commerce	Economics	Economics	<ul style="list-style-type: none"> ● Accounting ● Economics 	<ul style="list-style-type: none"> ● Accounting ● Economics 	<ul style="list-style-type: none"> ● Accounting ● Economics ● Business Studies
Technology	Technology	<ul style="list-style-type: none"> ● Design and Visual Communication ● Fashion Technology ● Food and Nutrition ● Digital Technologies 	<ul style="list-style-type: none"> ● Design and Visual Communication ● Fashion Technology ● Food and Nutrition ● Digital Technologies 	<ul style="list-style-type: none"> ● Design and Visual Communication ● Fashion Technology ● Digital Technologies 	<ul style="list-style-type: none"> ● Design and Visual Communication ● Fashion Technology ● Digital Technologies
The Arts	<ul style="list-style-type: none"> ● Dance (see Enrichment) ● Drama ● Music ● Visual Art 	<ul style="list-style-type: none"> ● Dance ● Drama ● Music ● Visual Art 	<ul style="list-style-type: none"> ● Drama ● Music ● Visual Art ● Dance 	<ul style="list-style-type: none"> ● Drama ● Dance ● Music ● Photography ● Design ● Painting and Printmaking ● Art History 	<ul style="list-style-type: none"> ● Drama ● Dance ● Music ● Photography ● Design ● Painting ● Printmaking ● Art History
Vocational Employment Related Courses			Enhancing Pathways	Tourism Culinary Studies Gateway Enhancing Pathways	Tourism Culinary Studies Enhancing Pathways

Please Note: Classes will only run if there are sufficient numbers opting into a course

Year 9 Enrichment Choices 2024

Students can **EITHER** choose

1. Economics - Full Year Course

OR

2. Two Half Year Courses selected from the following:

Semester	Semester
Kai for the Community	Make and Create
Pathway to Podium (By application only)	Smart Spenders
Smart Earners and Savers	Dance and Drama
Dance	Short Film - Screen Acting
Drama Production	Curious about Science
Zoology (All about Animals)	Fashion Photography
Stop Motion Animation	
Māori Performing Arts	

Please Note - students are to select a backup for each Semester as courses will only run if there are sufficient student numbers for a course to run or options are full at the time of student choice.

*Learning Enhancement: this course is for students who need additional support with their learning. Parents can contact jac@cghs.school.nz for more information.



Christchurch Girls' High School / Te Kura o Hine Waiora has a holistic approach to education. Academic progress is balanced with development of the whole person through sporting, cultural and service opportunities, and wide participation in these.

Sport / Hākinakina

All ākonga are encouraged to be involved in sport and recreation. Our aims are to foster fair-play and to emphasise enjoyment. There are countless opportunities to play sport as well as sports to play.

The Sports' Director and Sportfit Co-ordinator work with the Sports Council to promote sport as well as provide a range of lunchtime activities and design individual fitness programmes for ākonga.

Most sports are open to all year groups, with competitive and social teams and activities. We enjoy outstanding sporting success at all levels: local, regional and national. Opportunities for coaching are offered in a wide variety of sporting codes.

Sports at Christchurch Girls' High School / Te Kura o Hine Waiora

- Aerobics
- Archery
- Athletics
- Badminton
- Basketball
- Bowls
- Cricket
- Cross-country
- Cycling
- Dragon Boating
- Equestrian
- Fencing
- Football
- Futsal
- Gym Sports
- Hockey
- Indoor Netball
- Indoor Football
- Korfball
- Lifesaving
- Mountain Biking
- Multisport
- Netball
- Polo
- Rock-climbing
- Rowing
- Rugby
- Sailing
- Sevens
- Snow Sports
- Squash
- Surfing
- Swimming
- Tennis
- Volleyball
- Water Polo





Outdoor Pursuits / *E puta ki te taiao*

Overnight camps are a valuable part of the school curriculum and are held to encourage ākongā to challenge themselves and to put classroom learning into a real life setting.

Whole year level camps occur in Years 9 and 10 and subject specific camps are held for senior levels. Year 9 participate in an overnight camp shortly after their schooling starts. At this camp ākongā develop positive relationships with each other, their ako teacher and peer support leaders, and build confidence through a range of adventure-based activities and challenges.

Year 10 camps occur at the end of the year and cater for all ākongā abilities and confidence levels.

Senior ākongā are able to participate in a range of camps depending what subjects they study.

School Camps Available

- Waipara - Outdoor education and peer support (Year 9)
- Craigieburn - Outdoor adventure camp (Year 10)
- Queenstown - Geography* (Year 11)
- Franz Josef - Geography* (Year 13)
- Wainui - Biology* (Year 13)
- Temple Basin - Biology* (Year 12)
- Cass Valley - Geography* (Year 12)

* Students must take this subject to attend the camp. Camps listed may vary from year to year.





Arts and Culture / *Ngā toi me ngā ahurea*

The cultural life of our school is rich and diverse and allows ākonga to develop and express their creative talents. Art, Drama, Music and cultural performance groups are an important part of the school curriculum and are offered at all learning levels by specialist and passionate teachers. 2023 will see the introduction of Dance to our Junior curriculum. Ākonga can also join some of the many cultural and interest groups run at the school. Ākonga interested in music can opt to take lessons in the wide range of instruments available and are encouraged to join one of the many performance groups such as our jazz band, orchestra or one of our choirs. Our musical groups perform regularly in the community and at regional and national competitions and musical showcases. Drama ākonga take part in performances and productions throughout the year and can join one of our amateur acting or theatre sports groups. There are also groups for ākonga interested in learning dance, Kapa Haka, and Pasifika performances well as literary and academic pursuits such as debating, poetry and writers groups.

Some of the Art and Culture Opportunities:

- Kapa Haka
- Orchestra
- Strings
- Brass band
- Chamber music groups
- Individual music lessons
- Rock band
- Cantrices (Classical choir)
- Pops choir
- Pasifika/Polyfest
- Theatre sports
- Dance
- Debating
- Writers groups
- Alison Harper Memorial
- Sheilah Winn Shakespeare Festival

Clubs Offered Include:

- Amnesty International
- Connect
- Global Relations Group
- Writers' Group
- Duke Edinburgh Awards
- SAGA (Sexuality and Gender awareness)
- Service and leadership groups
- Enviro Group
- Gardening committee
- SASH (Students Against Sexual Harm)
- SHE (Students for Health and Wellbeing Education)





Leadership and Service / *Mana tangata*

All ākonga are encouraged to participate and serve others in some capacity through the many cultural, sport and service opportunities available across all levels of the school. Ākonga gain positive leadership experience, develop their own personal skills, strengths and interests, and are expected to respect others, demonstrate initiative and have commitment.

In addition to the traditional Prefect leadership roles, senior ākonga can lead as heads of cultural and sporting groups, senior committees, club activities or take on roles as student council members, student board trustee, ako captains, librarians and laboratory assistants. Peer support, peer tutoring and serving as a teacher assistant allows senior students to support younger ākonga and build positive relationships across the year levels. Examples of junior ākonga leadership roles include being an ako or team captain or a member of a house committee, student council or cultural or service group.

Junior ako classes support a chosen charity. All ākonga contribute to a range of charitable causes. Themed assemblies are held throughout the year for these special occasions.





International / He tauwhenua

Christchurch Girls' High School / *Te Kura o Hine Waiora* values cultural diversity and the histories and traditions of all people. Students are exposed to a wide range of experiences to help them gain an understanding of different cultures and thrive in a modern global village.

Overseas language and culture trips, hosting international students, online class exchanges and our international student buddy programme all help contribute to the global citizenship of our students.

International students are warmly welcomed and Christchurch Girls' High School / *Te Kura o Hine Waiora* is home to an international student population from a variety of countries such as Argentina, China, Germany, Japan, Korea, Singapore and Thailand.

International fee paying students who wish to enrol should visit www.cghs.school.nz or email international@cghs.school.nz for further details.





Acland House is located at 85 Papanui Road. The hostel is governed by the Board of Trustees, supervised by the Principal and managed by the Director of Boarding. The boarding establishment comprises the original historic homestead and adjoining dormitory wings. There are places for 110 boarders from Year 9 to Year 13 and a further new two storey accommodation block is currently being built to increase the roll to 125 for 2024..

Junior ākonga are accommodated in dormitories while we also have 36 single rooms and 3 flats available for senior boarders. Supervised study and support are provided for junior ākonga in the evening. Junior ākonga travel together in a 'croc' formation to the school, a twenty minute walk along the edge of Hagley Park. Ākonga enjoy their own common rooms, recreational facilities and swimming pool.

Boarders and their families are an integral and much-valued part of the school. A strong sense of community is developed within the boarding establishment, built on respect and caring relationships.

The Director of Boarding and hostel staff are committed to providing a supportive and safe environment. Throughout the year activities are held to foster hostel spirit and provide enjoyable shared experiences. The friendly rivalry between hostel and school displayed at sporting events and special occasions highlights this sense of community. Senior ākonga have the opportunity to contribute to hostel life through leadership roles.





Our Pastoral team (Te Whare Hauora) support and monitor individual learning and well-being. Christchurch Girls' High School / *Te Kura o Hine Waiora* aims to take excellent care of our ākonga, working in partnership with whānau. The support of whānau is highly valued. The Te Whare Hauora team work closely together to ensure each ākonga is able to achieve to their full potential.

Every ākonga belongs to an Ako class. Ako teachers are the first point of contact between home and school. Each year level is overseen by a Dean. Deans and Ako teachers move through the school with ākonga from Year 9 to Year 13 in order to develop strong relationships and provide continuity of care and support.

Our Counsellors, Careers Advisor and Learning Enhancement team provide support and pastoral care working alongside our Deans and Ako teachers on an individual basis when needed. Both ākonga and parents are able to meet with these people.

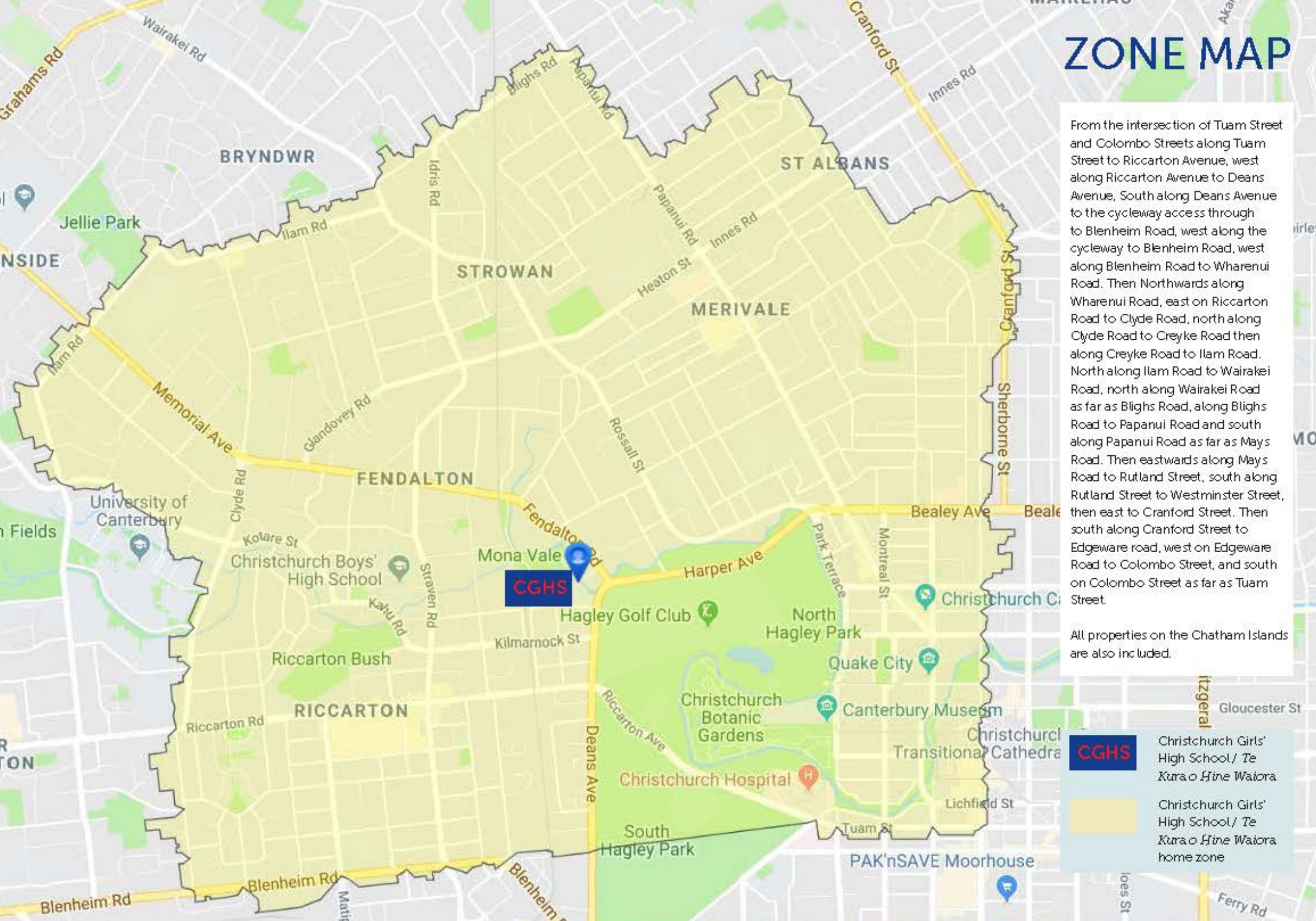
Our Counsellors work to support ākonga with social and emotional needs. Outside agencies and specialist consultants can be accessed to ensure the most appropriate support is available. Course and careers support is offered by the Careers Advisor. Individual learning enhancement is provided to ākonga who have specific learning needs and support staff in these areas throughout the school are always available to assist.

The Whānau, Pasifika and International ākonga are supported by our Pasifika and Māori Kaiārahi and our International Director. They engage with families to celebrate success, discuss concerns and explain opportunities relating to these groups within our school community.

Our kura believes in developing a strong relational culture and takes a restorative approach when an issue arises. A relational culture promotes authentic relationships and we are a school where ākonga are taught social skills alongside academic skills. Healthy and productive relationships between and among ākonga and staff facilitate a positive school climate and learning environment.

In a situation where relationships are broken, restorative practices are used to encourage communication, build social and emotional competence and resolve problems. The use of restorative practices when resolving conflict, restoring relationships or repairing harm reflects a commitment to our values of Manaakitanga, Rangatiratanga, Aroha and Whanaungatanga. This process helps build empathy and gives our students the tools to take with them as they journey through school and into adulthood.

ZONE MAP



From the intersection of Tuam Street and Colombo Streets along Tuam Street to Riccarton Avenue, west along Riccarton Avenue to Deans Avenue, South along Deans Avenue to the cycleway access through to Blenheim Road, west along the cycleway to Blenheim Road, west along Blenheim Road to Wharenui Road. Then Northwards along Wharenui Road, east on Riccarton Road to Clyde Road, north along Clyde Road to Creyke Road then along Creyke Road to Ilam Road. North along Ilam Road to Wairakei Road, north along Wairakei Road as far as Blighs Road, along Blighs Road to Papanui Road and south along Papanui Road as far as Mays Road. Then eastwards along Mays Road to Rutland Street, south along Rutland Street to Westminster Street, then east to Cranford Street. Then south along Cranford Street to Edgeware road, west on Edgeware Road to Colombo Street, and south on Colombo Street as far as Tuam Street.

All properties on the Chatham Islands are also included.

- CGHS** Christchurch Girls' High School/ Te Kura o Hine Waioira
- Christchurch Girls' High School/ Te Kura o Hine Waioira home zone



The Board of Trustees invites applications from parents who wish to enrol their daughters at Christchurch Girls' High School / *Te Kura o Hine Waiora*. **Applications close on 26th July 2024.** Further information and online application forms are available on our website www.cghs.school.nz under the 'Enrolment' tab.



10 Matai street | Riccarton | Christchurch 8011 | New Zealand
Telephone: + 64 3 348 0849 | email: admin@cghs.school.nz
Website: www.cghs.school.nz